

Stage III Pressure Ulcer

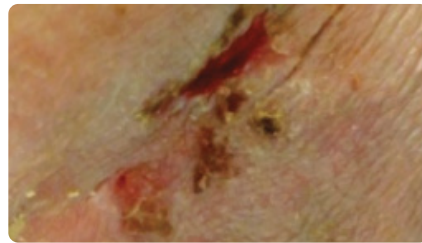
Jen Agosti, RN, CWCA, AACCS, CFCN, DAPWCA, ABLIS,
and President - Nurse Sharks, Inc. - Weedville, PA

"I was impressed with the dramatic speed of which granulation tissue grew in this chronic wound which had not responded to multiple other treatment interventions in nearly 3 years."

- Jen Agosti, RN, CWCA, AACCS, CFCN, DAPWCA, ABLIS



Start of care:
2.4 cm x 1.9 cm x 0.5 cm
(2.3 cm³)



Week 1:
0.5 cm x 0.5 cm x 0.2 cm
(0.05 cm³)



Week 2:
0.3 cm x 0.3 cm x 0.1 cm
(0.01cm³)



Week 4:
Complete Wound Closure

Patient Data	
Age	84
Sex	Female
General Health Status	Alzheimer's Dementia; Incontinence; Hypertension
Wound Location	Inner Buttock
Wound Duration	3 Years
Prior Therapies	NPWT, Collagenase, Sodium Carboxymethylcellulose + Ag

Excellagen is indicated for the management of wounds. Although many patients benefit from the use of the product, results may vary. Please see full prescribing information.